

POWER2008-60147

Measurement of Temperature Profile in Non-Premixed Turbulent Flame of Lean LPG/Air mixture

Hayder Abed Dhahad

Bani waleed Institute of Technology- Libya

E-Mail : hayder_abed2002@yahoo.com

Abstract

The current research was carried out on the topic of non-Premixed turbulent flames.

The temperature profile of non- premixed turbulent flame of lean L P G- Air mixture ($\phi = 0.66$) were obtained.

A simple type of Bunsen burner with two different inside diameter and having two different perforated plates was designed in order to achieve turbulent flow .

The temperature was obtained at the two diameters and different positions for perforated plates. The temperature profiles were obtained by using a fine thermocouple at height (3mm) above the burner mouth. The maximum temperature for all cases was found at flame edge, and start decreasing for both sides.

INTRODUCTION

In the recent years much experimental and theoretical research has been carried out in order to examine the structure and properties of non-Premixed turbulent flames (1), (2), (3),(4),(5),(6) and (7).

Much of the previous consideration of flames has concentrated on premixed combustion where there is a homogeneous distribution of air and fuel (8) .

In non-Premixed flames the air and fuel are introduced separately(9),and (10). We have carried out an experiment, where the flame and the flow are made to be turbulent, starting from the burner edge, i.e. we wish to neglect the laminar and transitional flow, in order to give a truly turbulent flame(7) and (11). In previous research into this topic no one has developed a comprehensive theory.

Most of the experimental research carried out for finding the velocity and temperature profiles has used the Laser Doppler Anemometry (LDA)(12), and thermocouples respectively (13). In the case of buoyant convection, which will be studied here, the density is changing substantially as a result of a heat release for most reacting gases (notably for all practical combustion reactions) (14) and (15). There is one good advantage of diffusion flames rather than premixed flames, that is the consumption rate can be found from the rate at which both fuel and oxidizer are brought together in proportions for reaction. But also the premixed flame has a well-defined propagation speed, which is nevertheless hard to measure (8).

The present work is not directed primarily towards investigating chemical reaction rates.

Instead the present experimental study is concentrated on the general behavior of buoyant turbulent diffusion flames.

In the present experiment we have to consider that the fluctuating values, especially for velocity are function of time and length scale. The turbulence level is characterized by means of the Reynolds number (Re) where the density and dynamic viscosity depend upon the fluid properties(16).

APPARATUS:

There are major and minor apparatus used in the present experiment in order to achieve the best temperature profile across the mouth of the burner.

The apparatus were the Bunsen burner, which was designed and manufactured to produce a turbulent flame at the exit, traverse mechanism which was designed to give a uniform and smooth movement crossing the mouth of the burner, flame trap to protect the system from the back fire, perforated plates with different holes diameter in order to achieve a turbulence flame, safety devices, control valves, and gas sensor

THE BURNER:

The arrangement of the burner used in this experiment is the same as that for Bunsen burner, where the gas is flowing inside the burner and the air will surround it.

The construction of the burner is shown in the figures (1.a,b,and c). It consists of an out side sleeve with an inner diameter 33mm and two sets of three spacers of diameters 25.5mm, and 17.7mm respectively. Each set of spacer has two spacers of the same height of 25mm, and one spacer of height 50mm, the spacers have been designed in such away that there is a small clearance to insert them easily. These spacers are fixed from the bottom by a slight contraction or throat at a height of 100mm, and from the top by a threaded cap (see fig.1-c)

THE CONICAL CAP:

The cap with a circular conical shape has been designed for two reasons, first to fit the perforated plates and spacers, and the second to achieve the correct directional streams of air which will produce a turbulent flow (11).

PERFORATED PLATES:

This is a circular flat plate, which has a number of regularly spaced holes in it in order, to produce a turbulent flow. Different plates ,with different sizes of holes can be used to produce different turbulence characteristic. This in turn changes the blockage ratio of the plate.

In the design of the plates it is difficult to achieve correct spacing between the holes .The pressure drop across the plate varies according to the blockage ratio. These different plates were obtained ready-made from a commercial source saving a lot of time in setting up the experiment. The plates are supplied as square sheets, and have to cut into a circular shape to be inserted in the 33mm diameter sleeve in the burner(11).

Two plates were made initially, one with a 1mm hole diameter (P d), and a blockage ratio of 81% , and the other with a 2mm hole diameter (P d), and blockage ratio of 75%.

Gas flow rate was $0.006 \text{ m}^3/\text{s}$, this will make the Reynolds number at a perforated plates between 28340 to 35620 ,depended to a blockage ratio

TRAVERSE MECHANISM:

This is a very heavy unit with two-dimensional movement in such away that it can move forward and backward or to the right and left-hand side.

It has a special groove where the holder of the thermocouple can be fixed. The traverse mechanism was positioned in such away that the thermocouple junction, or the probe was located above the burner exit by approximately 3mm . The distance moved was measured by means of a dial gauge with accuracy of 0.002 mm. The dial gauge has a magnetic base to fix its position. And a special spring rod touches the moving part of the traverse mechanism.

SAFETY DEVICES:

These are the most important thing in any work. This is especially true in this experiment, because there is likelihood of gas leakage, or of partially premixed combustion due to the presence of air inside the gas pipe during starting up or shutdown. These safety devices are(Control valve, Flame Trap and Gas sensor as a leakage sensor)

L P G COMPOSITION :

The liquefied Petroleum Gas (L P G), which has been used in this experiment, Analysis showed that the composition of L P G are :

	Ethane
3.33%	
	Propane
57.1%	
	Isobutene
16.45%	
	n- butane
21.9%	
	Is Pentane
1.22%	

THERMOCOUPLES IN A GAS STREAM :

When a thermocouple is used to measure a local temperature in the gas flowing out of the burner, it indicates a temperature (which is the measured value) between the temperature at the edge of the burner and the temperature at the tip of the flame, where the measured value can be denoted as (T_{th}). The exact value of T_{th} is determined by a balance of heat transfer from the thermocouples junction, by three ways (conduction, convection, and radiation) (14).

The thermocouple used in this experiment was a nickel – chrome, nickel – alumel thermocouple with a diameter of 2mm, It is K type (17).

TEMPERATURE PROFILES EXPERIMENTS :

The thermocouple could be moved in the horizontal and vertical directions to keep the thermocouple junction at the burner centerline. The thermocouple was fixed on the traverse mechanism in a special way where the traverse mechanism has two channels on over the other, each having a scale in mm to measure the distance moved. The thermocouple was mounted at 3 mm above the burner port (13) .

The measurements of the flame were take over the radius of the burner from the center line out to 30 mm , concentrated at the region of the burner edge and the distance between Measurement points were kept small to resolve sharp changes in the temperature .

Thermocouple measurements were taken with burner port diameters of 25.5mm and 17.7mm, and using the two different perforated plates.

THE TEMPERATURE PROFILE MEASUREMENT :

The temperature profiles were obtained at nozzle diameter of 25.5mm and 17.7mm with 2mm and 1mm perforated plates in the upper and lower positions, see the fig (3 to 10).

At burner diameter 25.5mm and 1mm perforated plate, the temperature profile is border with the plate in the upper position than it is with the plate in the lower position. This is mainly because the boundary layer has a greater distance to grow inside the nozzle when the plate is in the lower position. It can be seen at both positions that the profile.

The thermal diffusivity coefficient of a lean L P G - air mixture is greater than the mass diffusivity Of deficient reactant (L P G diffusing in air) (24) . Thus, Lewis number, Le , which's the ratio of thermal diffusivity to mass diffusivity, is greater than unity producing preferential diffusion. According to [25] and [26], the combination of stretch rate and Lewis number effect should cause the flame temperature to decrease $Le > 1$.

The maximum flame temperature was about (900 c) because the Lewis number effect and the mixture was very lean $\phi = 0.66$ (lean flammability limit $\phi = .57$) .

Is almost a horizontal line from 30mm to 20mm radius (i.e. out side the burner), and the temperature starts to increase sharply after 20mm and reaches a maximum at the flame edge.

The temperature with the plate in the upper position is slightly higher than that for the plate in the lower position due to the difference in the boundary layer. At both cases the temperature starts decreasing for radii inside the flame edge and reaches a minimum at the centre line where the temperatures in both plate positions were about 48 c .

RESULTS AND CONCLUSION :

After having designed, constructed, and assembled the experimental rig several experiments were carried out to investigate the effect of burner diameter, perforated plates and their positions on the temperature profile. Finally we concluded the following points :

- - 1) Using 25.5mm and 17.7mm burner diameter, with both perforated plates at the upper and lower positions, the mean temperature was maximum at the flame edge and decreases on both sides.
 - 2) The profile top at 2 mm perforated plate is more flat than at 1 mm, due to the change in the perforated plate hole size which causes change in the turbulent length scale which in turn increases the fluctuation of the thin flame.
 - 3) The non- premixed turbulent flame of lean LPG – Air mixture has a great importance in the practical application where the major of burners which is used LPG as a fuel work by lean mixture with turbulent flame so the results of the research has a great importance in the design of these burners especially for the turbulence level and the position of turbulence generator (perforated plates)

References:

- 1) G.H.Wang, N.T.Clemense and P.L.Varghese [High- repetition rate measurements of temperature and thermal dissipation in a non-premixed turbulent jet flame] proceedings of the combustion Institute, volume 30, Issue 1 , January 2005, Pages 691-699.
- 2) M.Tagawa, F.Matsubara and Y. ohta [Heat transfer characteristics of a non-premixed turbulent flame formed in a cured rectangular duct] combustion and flame, 129: 151-163 (2002) .
- 3) N. Branley and W.P.Jones [Large eddy simulation of a turbulent non-premixed flame] combustion and flame, 127, 1914-1934 (2001) .
- 4) T. Mahmud, S.K.Sangha, M.Costa and A.Santos. [Experimental and computational study of a lifted, non-premixed turbulent free jet flame] Fuel, Vol.86, Issues 5-6, March-April 2007, P. 793-806.

- 5) S.A.Kaiser and J.H.Frank [Imaging of dissipative structures in the near field of a turbulent non-premixed jet flame] proceeding of the combustion Institute, Vol.3 1. Issues 1, January 2007, P: 1515-1523.
- 6) R.W.Bilger [The structure of turbulent non-premixed flames]. Twenty- Second symposiums (International) On combustion. (1998).
- 7) S.M.A Ibrahim and F.M.Elmahallawy [The structure of turbulent free diffusion flames] combustion and flame :60:141-155 (1985).
- 8) G.M.Abu-Orf and R.S. Cant [A turbulent reaction model for premixed turbulent combustion in spark-ignition engines] combustion and flame.122: 2000, P 233-252.
- 9) K.K. Kuo, [Principles of combustion]. page 451 New York , John Wiley & Sons(1987).
- 10) J.A. Barnard and J.N. Bradley[Flame and Combustion]. Chapman and Hall , London (1985).
- 11) V.D.Miosavljevic, A.M.K.P. Taylor, and J.H. Whitelow, [The influence of burner geometry and flow rates on the stability and symmetry of swirl-stabilized non-premixed flames]combustion and flames : 80: 196-208 (1990)
- 12) N.A. Chigier[Laser Velocimetry for Combustion Measurements in Jet Propulsion System] Combustion Measurements. 67-87 (1976).
- 13) M. Katsuki, Y. Mizutani, and Y. Matsumoto, [An improved thermocouples technique for measurement of fluctuating temperature in flames].Combustion and flame:67: 27-36(1987).
- 14) F. Krcith, and W.Z. Black, [Basic heat transfer]. 240-284 New York, McGraw-Hill (1980).
- 15) J.P. Holman, [Heat transfer].207-373 New York, McGraw-Hill (1989).
- 16) R.J. Goldstein, [Fluid Mechanics Measurements] . 108 New York, McGraw-Hill (1983).
- 17) J.P. Holman, [Experimental Methods for Engineers]Fourth Edition, New York, McGraw-Hill . (1984).
- 18) A.J. Yule, N.A. Chigier, S. Raipha, B. Boulderstone, and J. Ventura.[combustion - transition interaction in a jet flame] . Paper 80-0077, AIAA (1980).
- 19) F. Schneider, and J. Janicka, [The reynolds-stress tensor in diffusion flames]. Combustion and flame81: 1-12(1990).
- 20) P.A. Libby, and I .A. Williams, [turbulent reacting flow], topics on applied physics (1980) .44:80 -88
- 21) N.L.Crauford, S.K. Liew, and J.B. Moss, [Experimental and theoretical simulation of a Buoyant fire]. Combustion and flame 61: 63-77(1939).
- 22) N.A.Chigier, and A.J. Yule [The structure of eddies in turbulent flames] . Project Squid Technical report US-i-PU, (1979).
- 23) F.J. Weinberg, [Advanced Combustion Methods]. 183-198 Chapman and Hall , Lo (1986).
- 24- H. Tsuji, I. Yamaoka, Proc. Combust. Inst. 19 (1982) 1533–1540.
- 25- C.K. Law, Proc. Combust. Inst. 22 (1988) 1381–1402.
- 26- C.J. Sung, J.B. Liu, C.K. Law, Combust. Flame 106 (1996) 168–183.

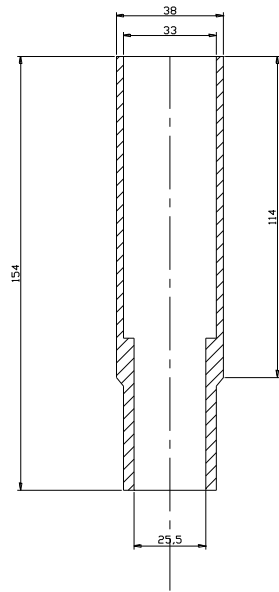
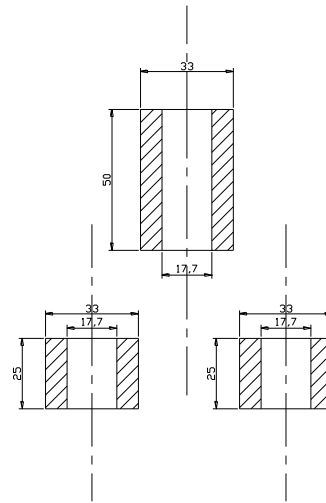


Fig (1-a) the outer sleeve of the burner



fig(1-b)the 17.7mm spacers

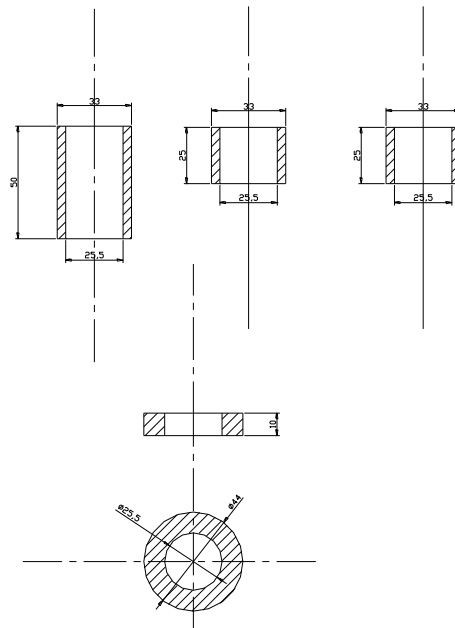


Fig (1-c) the 25.5 spacers and the burner cap

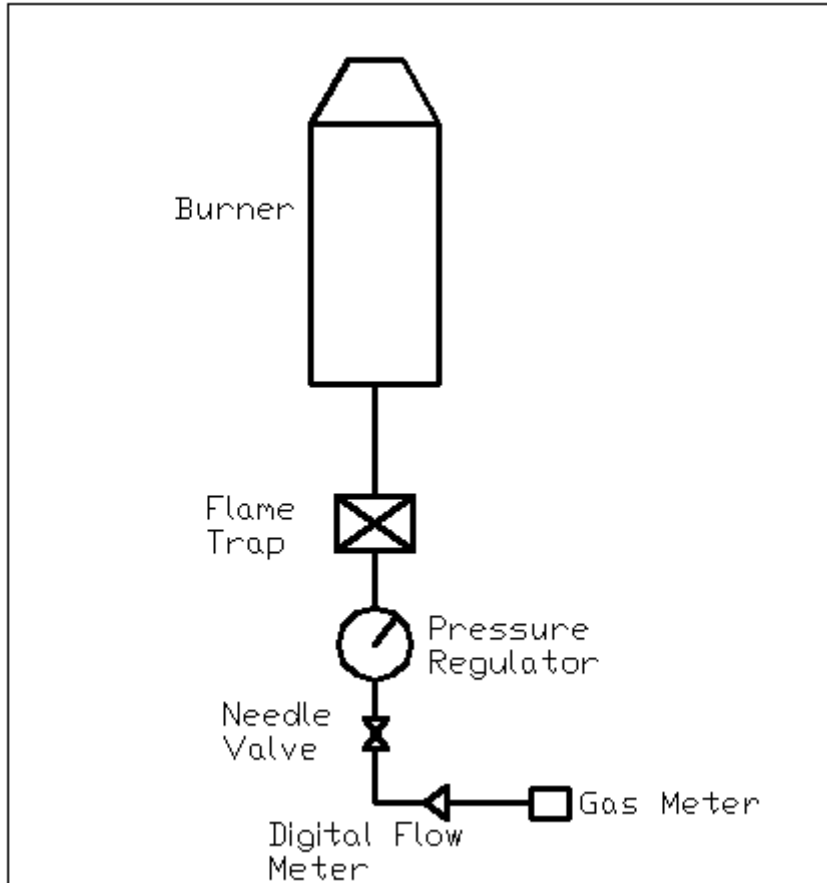
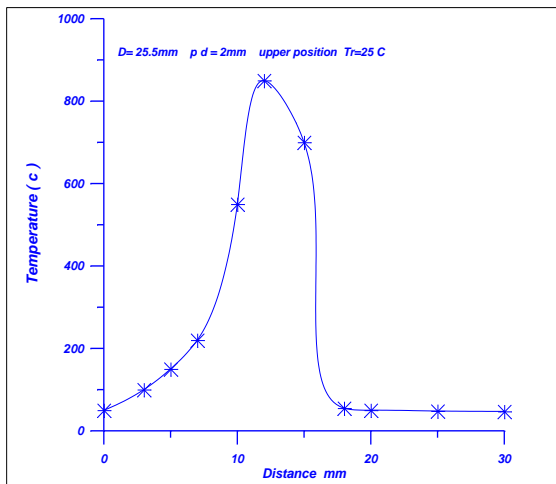


fig (2) Schematic diagram of the experiment



Fig(4)

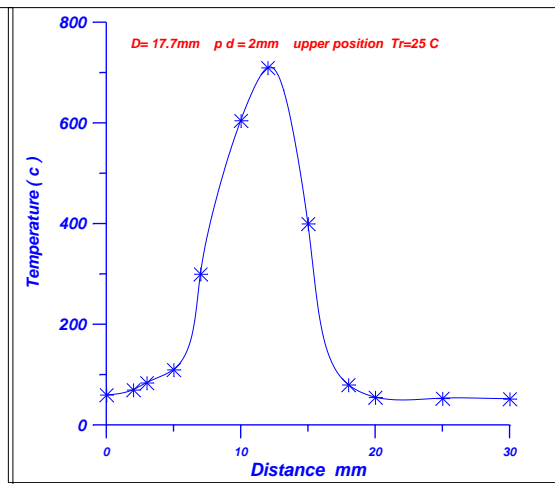
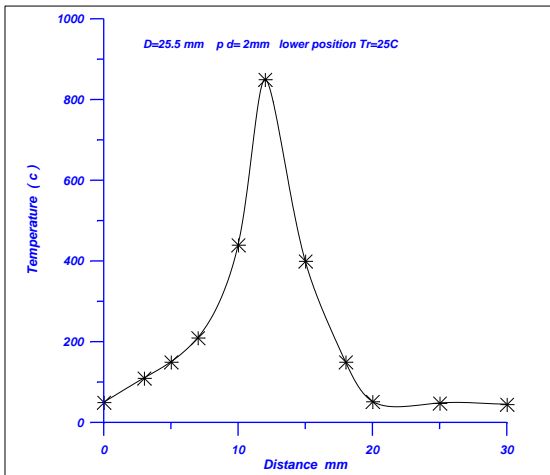
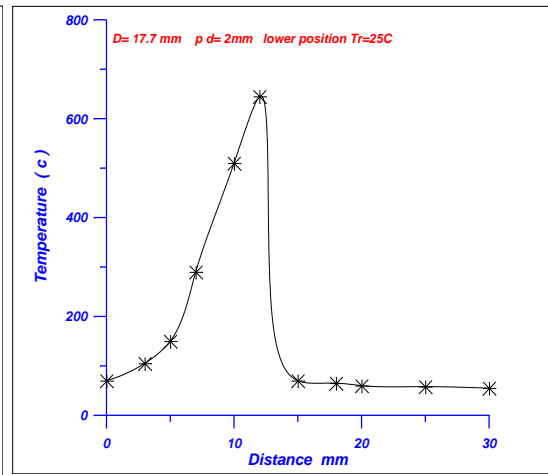


Fig (3)



Fig(6)



Fig(5)

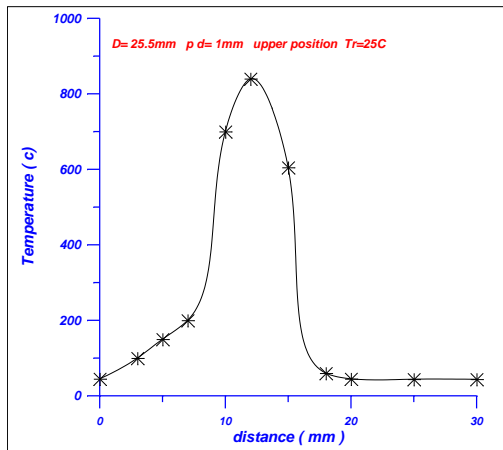
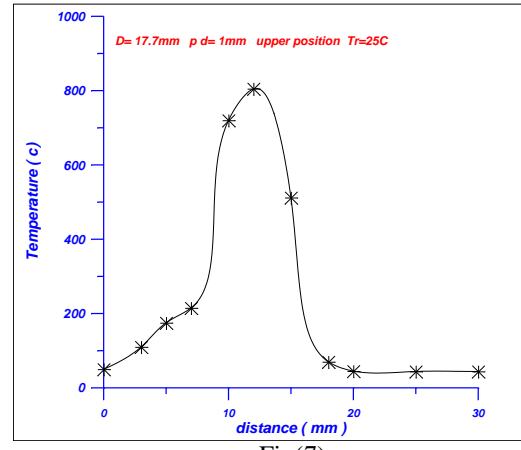
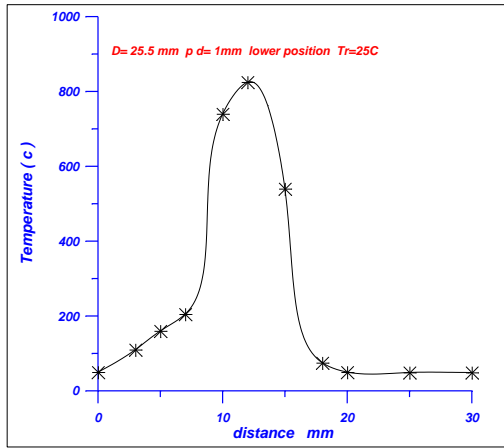


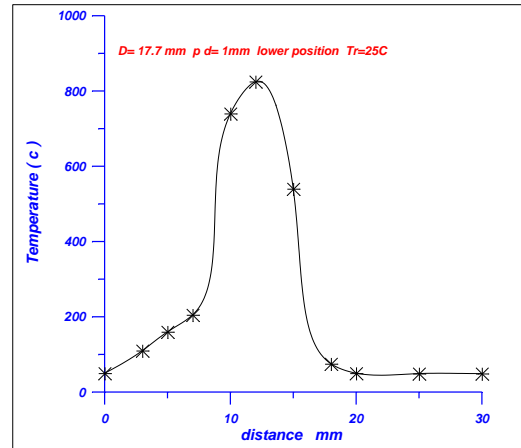
Fig (8)



Fig(7)



Fig(10)



Fig(9)