



University Of Technology
Building and Construction Eng. Dept.
Exam –FINEL- – 2015/2016

Subject : QUANTITY SURVYING Class:4
Branch : geomatics Time : 3 Hours
Examiner :D.Raid AL-Lamy Date :14 / 6 / 2016



NOTE: Answer FIVE Questions ONLY

Q1-A- Estimate the quantity of the following items for the reception in figure (1) and section 1-1 ? use the table in figure(2)

- Tile work for the floor
Cement Plastering
Brick work up the DPC level ,

Q1-B- Draw the time program using ARROW NET WORK for the activities in the table below to find the critical path AND draw the BAR-CHART for the same ?

activity	A	B	F	J	I	H	C	E	G
DURATION	2	4	3	1	5	4	3	2	1
Depend up on	--	--	B	F H	E G C	E	A	A	C

Q2-A- What are factors affecting the accuracy of estimates?

Q2 -B-- A-Estimate the quantity of the following items for the reception in fig (1) and section (1-1)? use the table in figure(2)

- 1- Excavation for foundation
- 2- Subbase for under foundation

Q3-A- What are the propos of prepare the estimate ?

**Q3-B -Give the pricing analyses for the concrete of the foundation in fig (1) DEPENDING ON THE FOLLWING INFORMATIONS?
INDIERECT COST10%&PROFIT 15%AND**

PRICE MATERIAL	OF	cement 15000 ID/TON SAND 40000ID/M3 GRAEL 50000ID/M3 STEEL BARS 900000 ID/TON	
FEES OF labors	3	carpenter team consist of 1 carpenter 75000ID +2 unskilled labor 2500ID WHOSE PRODUCTIVITY ARE (20m3/day) RENT OF MIXER250000ID/DAY WHICH PRODUCTIVITY25M3/day reinforcement team(black smith 75000 ID + 2 unskilled labor2500ID) 1.5T/DAY casting team(skill75000ID +8 unskilled labor2500ID) (15m3/day)	INDIERECT COST10% PROFIT 15% THE WAST PERSENT 5%
WEIGHT OF STEEL		$\phi 22 = 3.04\text{KG/M}$, $\phi 19 = 2.25\text{KG/M}$	

diies
Q4-A- WHAT are the qualifications of an estimator?

Q4-B- Draw the time program using precedence method for the activities in the table below to find the duration of project and critical path?

activity	A	B	C	D	E	F	G	H	K	L
DURATION	4	2	2	6	6	1	1	2	5	3
Depend up on	---	A	B F	C L	D G H	A	F	G L	A	F K

Q5-A- What are the advantages of unit price contract & ~~COST PLUS CONTRACT?~~

Q5-B- Find the total time for the project according to the items below by using the flow chart method?

Activities	Duration	Precedence by
A	1.5	-----
B	1.5	A
C	2.5	A
D	1	B

Q6-A- Draw the arrow net for the activities in the table below ?

activities	2-4	2-6	2-8	4-10	6-10	8-12	10-12	12-16	14-18	16-18	18-20
duration	2	3	2	5	0	3	0	2	2	2	3

10-14
2

Q6-B- Define the following :

Project - planning – Directing- estimate

ITEM NO	Description of item	UNIT	NO	LENGTH	WIDTH	HIGH OR THICKNESS	QUANTITY

FIG (2)

Flow net
9/1/20

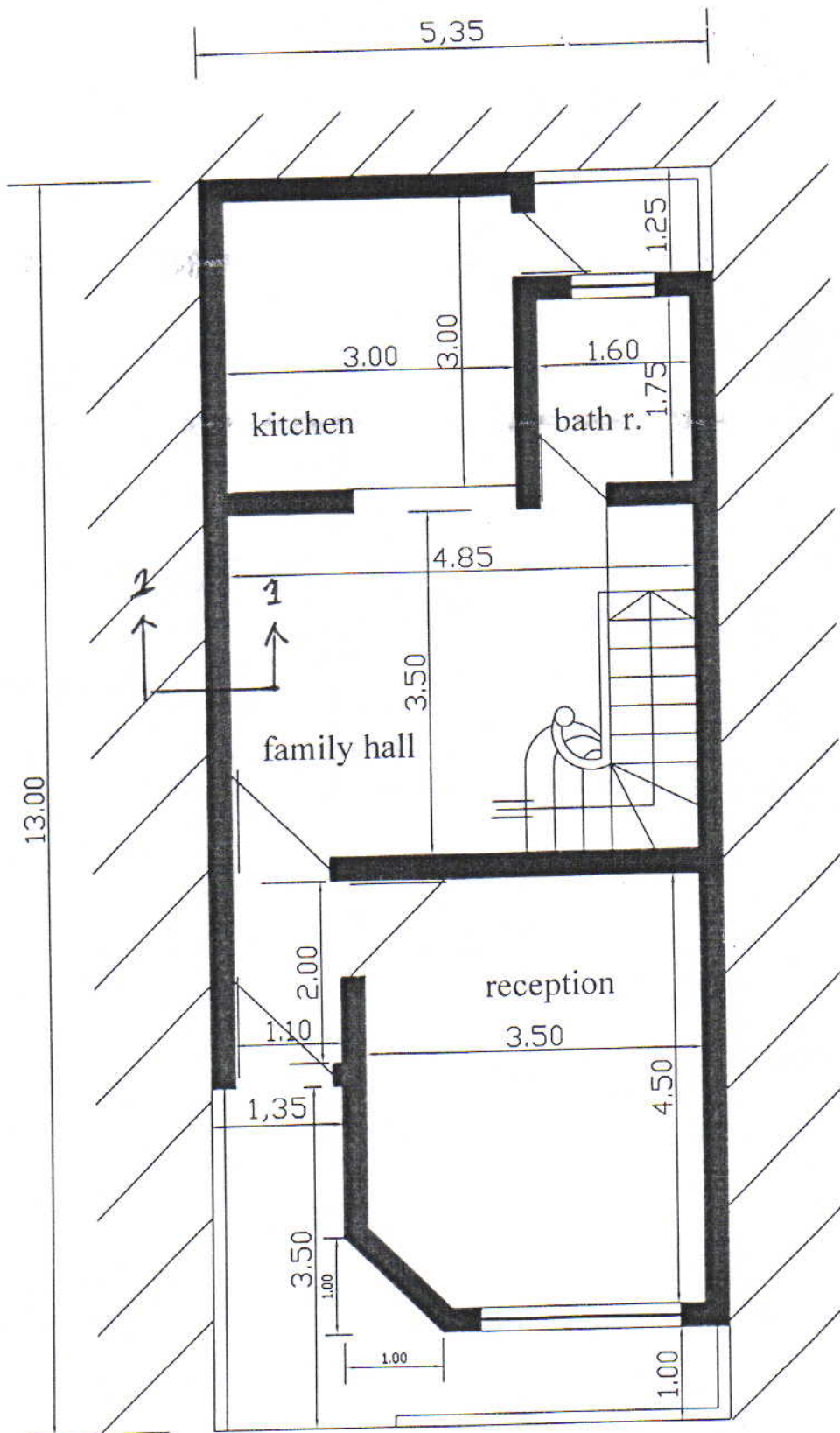
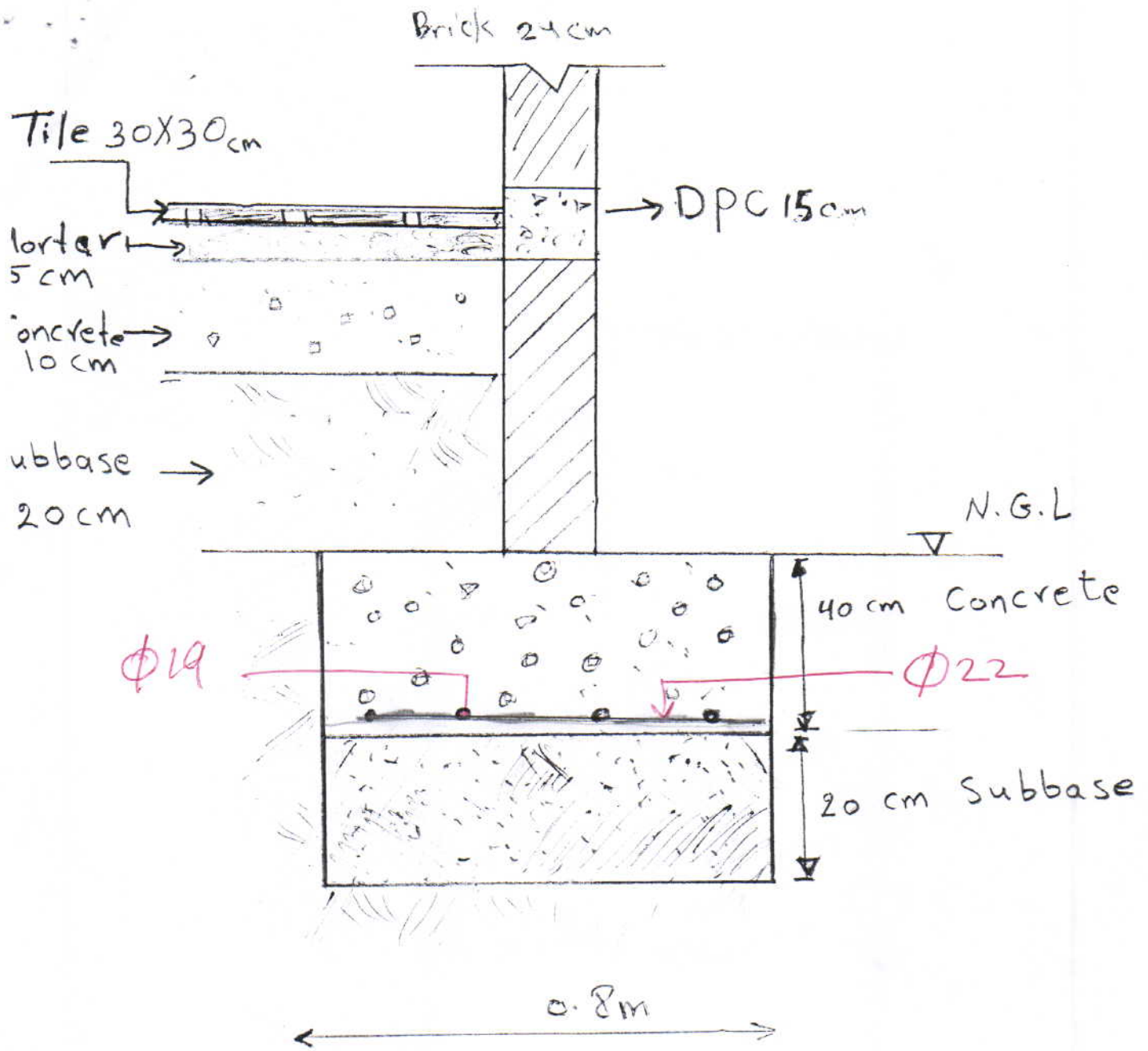


figure no.1



sec 1 - 1

Fig (2)

(3)

Q5-A

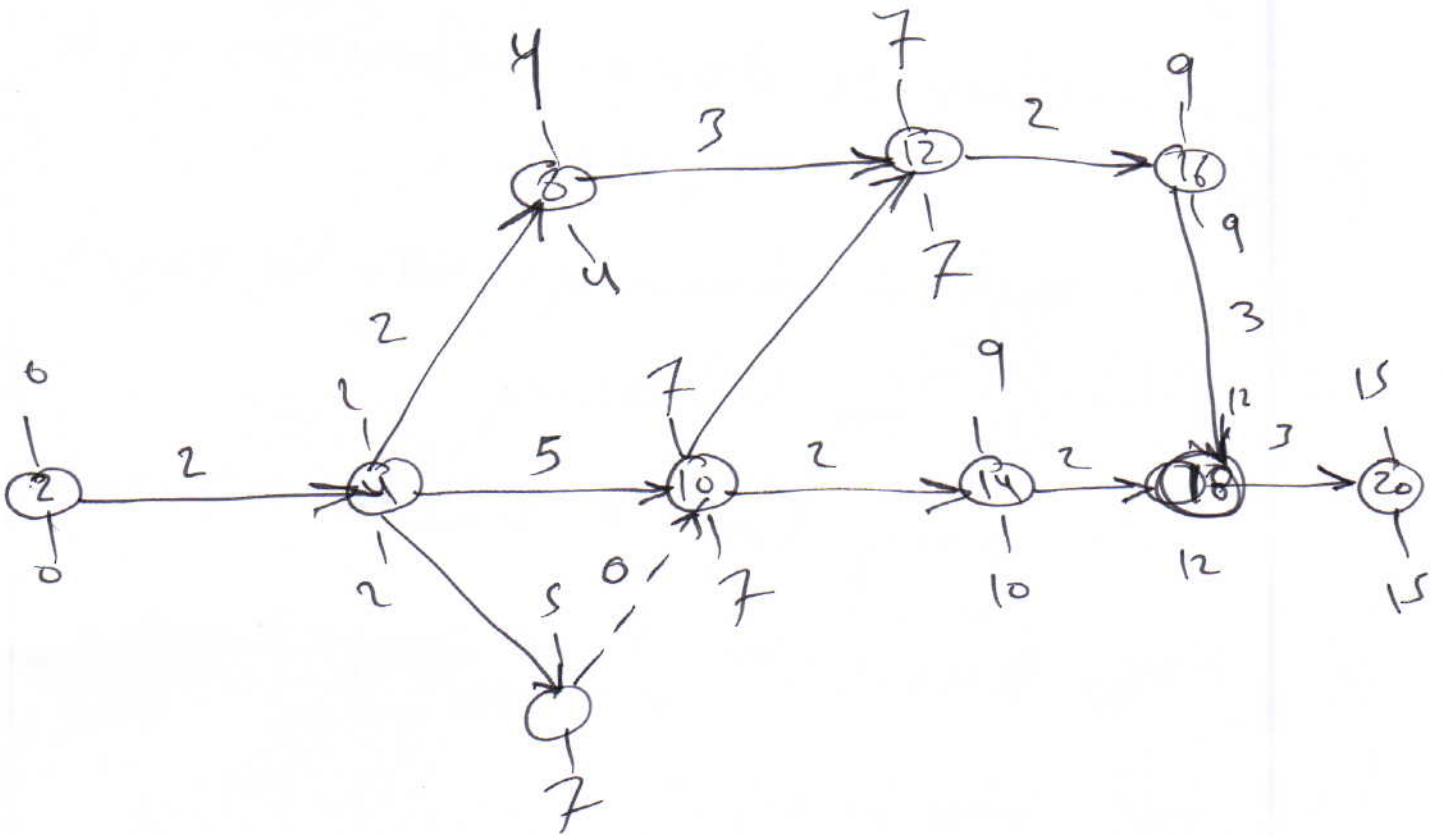
- 1- Complete design definition not required
- 2- Typical drawings can be used for bidding
- 3- Easy for contractor selection
- 4- Suitable for competitive bidding
- 5- flexibility.

Q5BANS

item	1	2	3	4	5	6
A	—					
B		—				
C		—	—			
D				—		

(4)

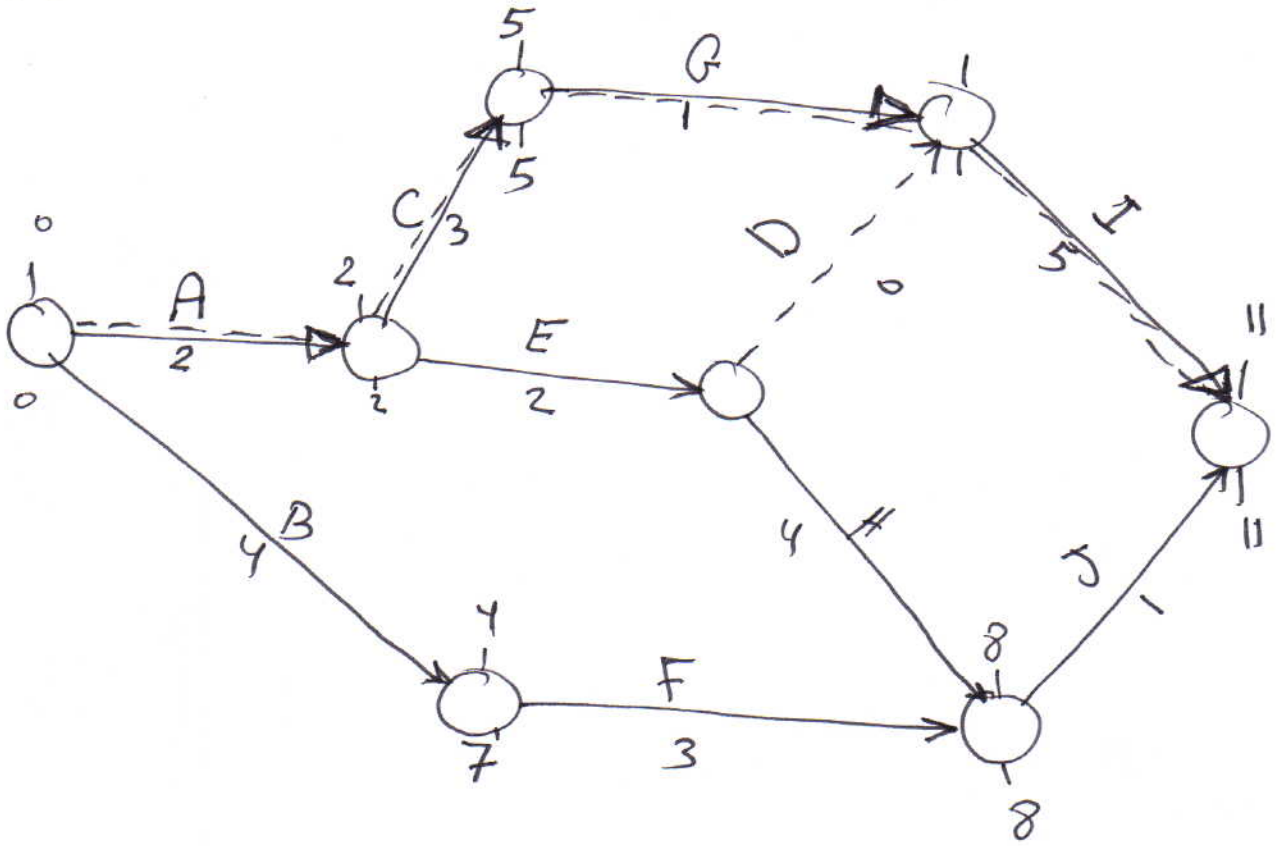
Q6.A Ans



Q6.B Define

Answer.

Q2-B



C.P = A - C - G - I

	1	2	3	4	5	6	7	8	9	10	11	12
A												
B												
C												
D												
E												
F												
G												
H												
I												
J												